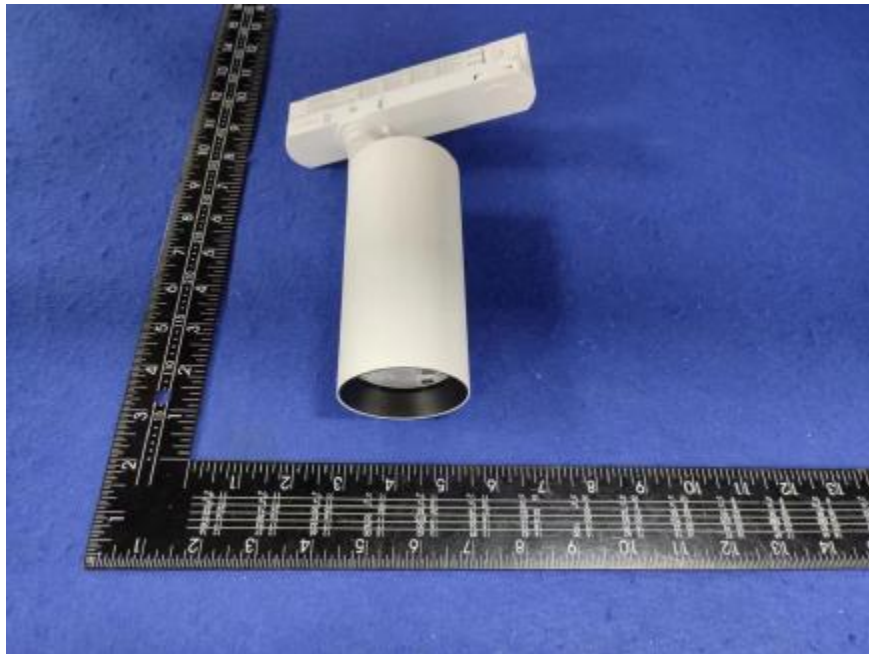


Luminaire Photograph



Light Output Ratio:	93.2%	
Luminaire Power:	28.15 W	
SHR Nominal:	0.00	Calculated using the TM5
SHR Maximum:	0.30	fine grid method.

C Range: 0 - 360DEG
C Interval: 30.0DEG
Test Speed: HIGH
Temperature: 25.3 °C
Operators: zoe
Test Date: 2023-10-5

γ Range: 0 - 180DEG
 γ Interval: 1.0DEG
Test System: EVERFINE GO-SPEX500_V1 SYSTEM V2.00.461
Humidity: 65.0%
Test Distance: 3.160m [K=1.0000]
Remarks: LAMP: BXRE-30G1000-A-83 Ra: 90
LENS: PM-0132A-007-056 24R
DRIVER: ECXe 1050.646 700mA
30minutes warm-up

LUMINOUS INTENSITY DISTRIBUTION DIAGRAM

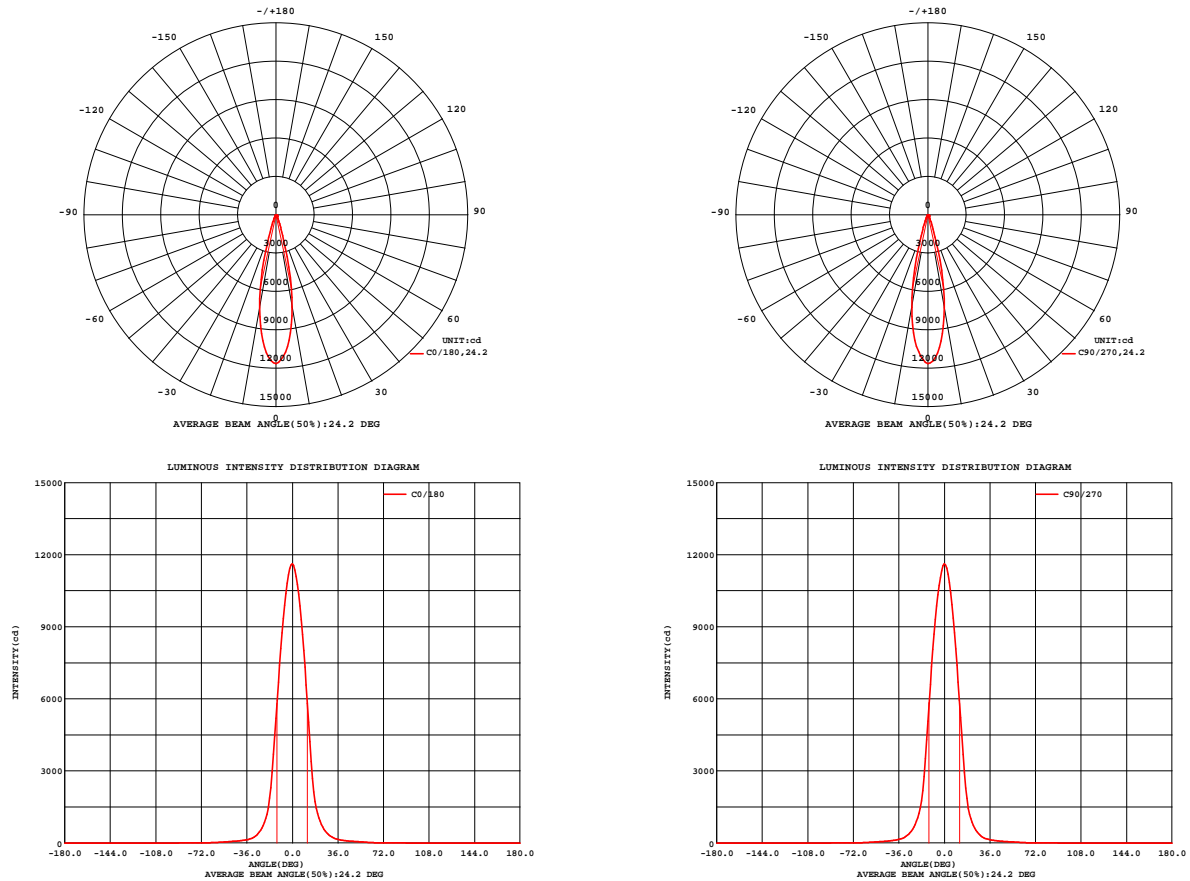


Fig. C0/C180

Fig. C90/C270

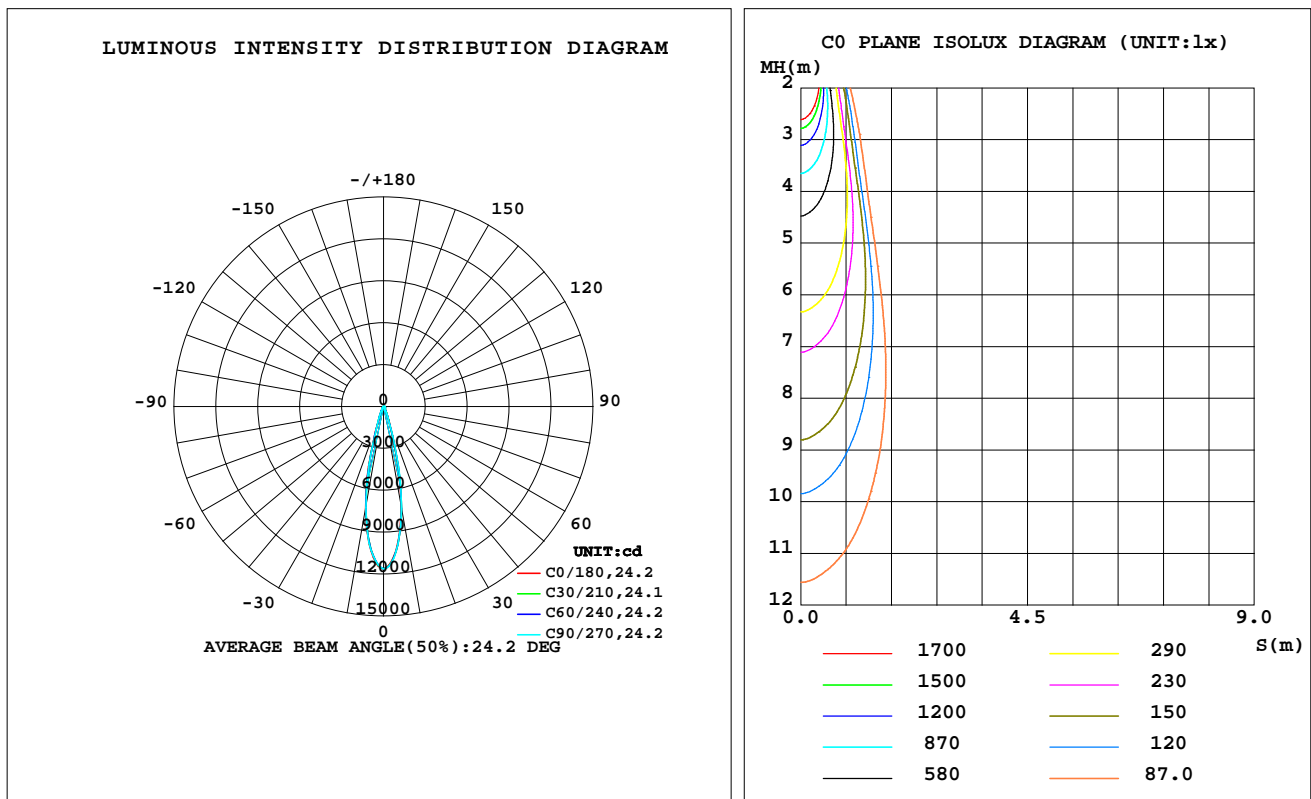
C Range: 0 - 360DEG
C Interval: 30.0DEG
Test Speed: HIGH
Temperature: 25.3 °C
Operators: zoe
Test Date: 2023-10-5

γ Range: 0 - 180DEG
 γ Interval: 1.0DEG
Test System: EVERFINE GO-SPEX500_V1 SYSTEM V2.00.461
Humidity: 65.0%
Test Distance: 3.160m [K=1.0000]
Remarks: LAMP: BXRE-30G1000-A-83 Ra: 90
LENS: PM-0132A-007-056 24R
DRIVER: ECXe 1050.646 700mA
30minutes warm-up

LUMINAIRE PHOTOMETRIC TEST REPORT

Test:U:220.07V I:0.1327A P:28.147W PF:0.9611 Freq:49.99Hz Lamp Flux:2523.8x1 lm		
NAME: 2319.200-UA-700	TYPE:	WEIGHT:
SPEC.: 3000K	DIM.:	SERIAL No.: 2310051122
MFR.: RISE	SUR.: 0.002826m2	Shielding Angle:

DATA OF LAMP		PHOTOMETRIC DATA				Eff: 83.58 lm/W
MODEL	Bridgelux	Imax(cd)	11626	S/MH(C0/180)	0.39	
NOMINAL POWER(W)	28	LOR(%)	93.2	S/MH(C90/270)	0.39	
RATED VOLTAGE(V)	220	TOTAL FLUX(lm)	2352.5	η UP,DN(C0-180)	0.0,46.4	
NOMINAL FLUX(lm)	2523.8	CIE CLASS	DIRECT	η UP,DN(C180-360)	0.0,46.8	
LAMPS INSIDE	1	η up(%)	0.0	CIBSE SHR NOM	0.00	
TEST VOLTAGE(V)	220	η down(%)	93.2	CIBSE SHR MAX	0.30	



C Range: 0 - 360DEG
C Interval: 30.0DEG
Test Speed: HIGH
Temperature:25.3℃
Operators:zoe
Test Date:2023-10-5

γ Range: 0 - 180DEG
 γ Interval: 1.0DEG
Test System:EVERFINE GO-SPEX500_V1 SYSTEM V2.00.461
Humidity:65.0%
Test Distance:3.160m [K=1.0000]
Remarks: LAMP:BXRE-30G1000-A-83 Ra:90
LENS:PM-0132A-007-056 24R
DRIVER: ECXe 1050.646 700mA
30minutes warm-up

ZONAL FLUX DIAGRAM

ZONAL FLUX DIAGRAM:

γ	C0	C45	C90	C135	C180	C225	C270	C315	γ	Φ zone	Φ total	%lum,lamp
10	731.5	739.7	739.4	726.9	740.0	732.8	734.0	744.6	0- 10	891.9	891.9	37.9,35.3
20	123.0	120.8	119.8	114.1	119.6	118.2	123.5	125.1	10- 20	979.0	1871	79.5,74.1
30	29.09	27.41	25.18	24.02	24.86	25.51	28.10	29.97	20- 30	268.0	2139	90.9,84.7
40	11.06	10.41	10.09	9.907	10.06	10.38	10.91	11.39	30- 40	101.8	2241	95.2,88.8
50	6.153	5.826	5.574	5.459	5.517	5.704	5.959	6.252	40- 50	60.25	2301	97.8,91.2
60	2.658	2.560	2.425	2.284	2.301	2.348	2.502	2.698	50- 60	36.79	2338	99.4,92.6
70	0.6025	0.6054	0.5604	0.5220	0.5246	0.5390	0.5519	0.6103	60- 70	13.23	2351	99.9,93.1
80	0.0113	0.0080	0.0096	0.0076	0.0091	0.0063	0.0079	0.0063	70- 80	1.608	2352	100,93.2
90	0	0	0	0	0	0	0	0	80- 90	0.0625	2353	100,93.2
100	0	0	0	0	0	0	0	0	90-100	0	2353	100,93.2
110	0	0	0	0	0	0	0	0	100-110	0	2353	100,93.2
120	0	0	0	0	0	0	0	0	110-120	0	2353	100,93.2
130	0	0	0	0	0	0	0	0	120-130	0	2353	100,93.2
140	0	0	0	0	0	0	0	0	130-140	0	2353	100,93.2
150	0	0	0	0	0	0	0	0	140-150	0	2353	100,93.2
160	0	0	0	0	0	0	0	0	150-160	0	2353	100,93.2
170	0	0	0	0	0	0	0	0	160-170	0	2353	100,93.2
180	0	0	0	0	0	0	0	0	170-180	0	2353	100,93.2
DEG	LUMINOUS INTENSITY:X10cd									UNIT:lm		

C Range: 0 - 360DEG
C Interval: 30.0DEG
Test Speed: HIGH
Temperature:25.3℃
Operators:zoe
Test Date:2023-10-5

γ Range: 0 - 180DEG
 γ Interval: 1.0DEG
Test System:EVERFINE GO-SPEX500_V1 SYSTEM V2.00.461
Humidity:65.0%
Test Distance:3.160m [K=1.0000]
Remarks: LAMP:BXRE-30G1000-A-83 Ra:90
LENS:PM-0132A-007-056 24R
DRIVER: ECXe 1050.646 700mA
30minutes warm-up

LUMINANCE LIMITATION CURVES

Test:U:220.07V I:0.1327A P:28.147W PF:0.9611 Freq:49.99Hz
Lamp Flux:2523.8x1 lm

NAME: 2319.200-UA-700

TYPE:

WEIGHT:

SPEC.: 3000K

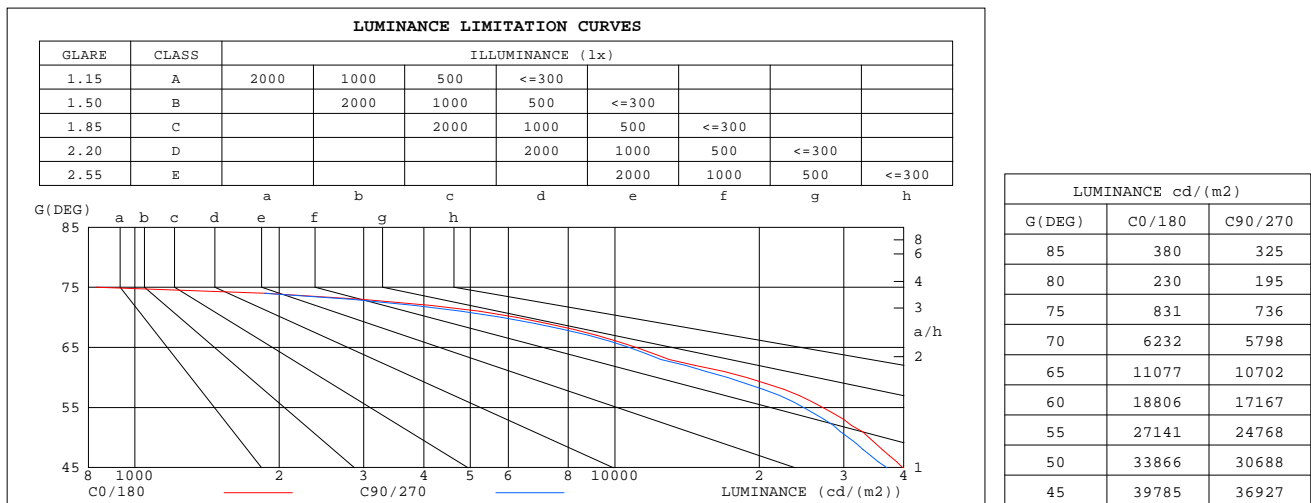
DIM.:

SERIAL No.: 2310051122

MFR.: RISE

SUR.: 0.002826m2

Shielding Angle:



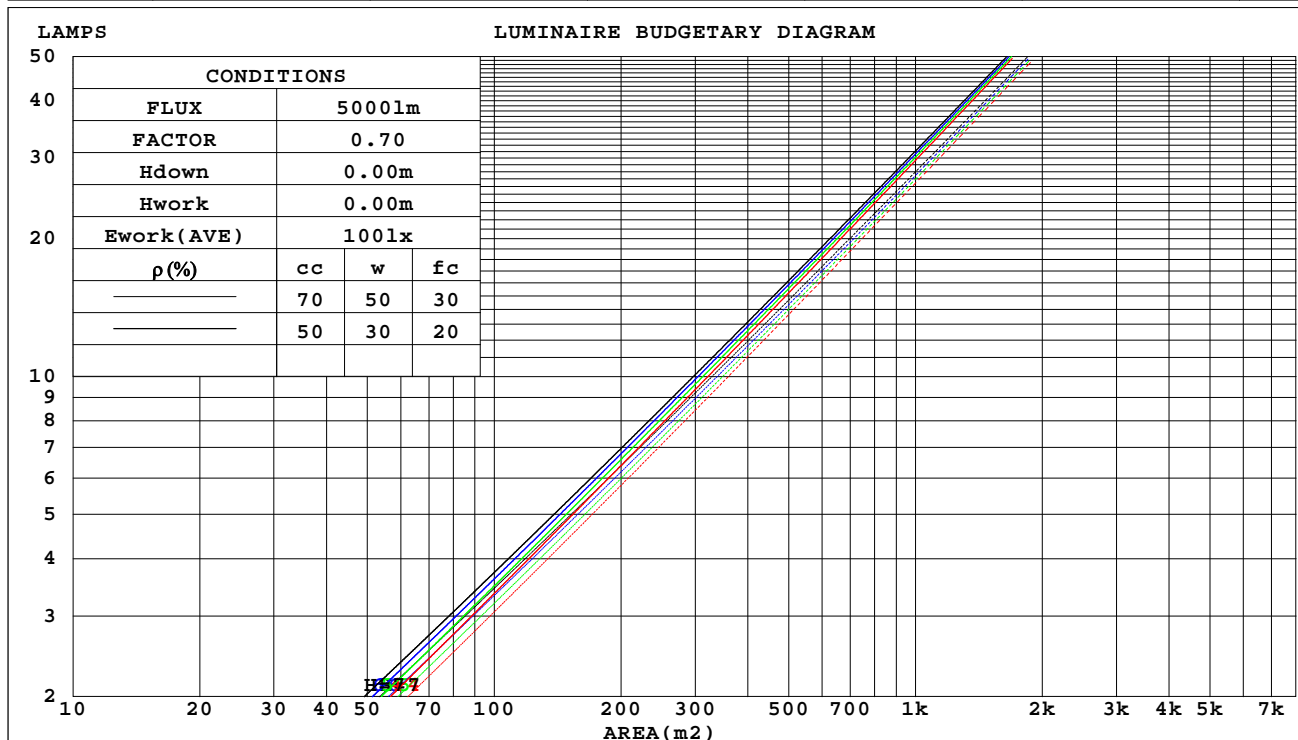
C Range: 0 - 360DEG
C Interval: 30.0DEG
Test Speed: HIGH
Temperature:25.3℃
Operators:zoe
Test Date:2023-10-5

γ Range: 0 - 180DEG
γ Interval: 1.0DEG
Test System:EVERFINE GO-SPEX500_V1 SYSTEM V2.00.461
Humidity:65.0%
Test Distance:3.160m [K=1.0000]
Remarks: LAMP:BXRE-30G1000-A-83 Ra:90
LENS:PM-0132A-007-056 24R
DRIVER: ECXe 1050.646 700mA
30minutes warm-up

CU AND LUMINAIRE BUDGETARY ESTIMATE DIAGRAM

Test:U:220.07V I:0.1327A P:28.147W PF:0.9611 Freq:49.99Hz Lamp Flux:2523.8x1 lm		
NAME: 2319.200-UA-700	TYPE:	WEIGHT:
SPEC.: 3000K	DIM.:	SERIAL No.: 2310051122
MFR.: RISE	SUR.: 0.002826m2	Shielding Angle:

ρ_{cc}	80%			70%			50%			30%			10%			0
ρ_w	50%	30%	10%	50%	30%	10%	50%	30%	10%	50%	30%	10%	50%	30%	10%	0
ρ_{fc}	20%			20%			20%			20%			20%			0
RCR	RCR:Room Cavity Ratio															



C Range: 0 - 360DEG
C Interval: 30.0DEG
Test Speed: HIGH
Temperature:25.3℃
Operators:zoe
Test Date:2023-10-5

γ Range: 0 - 180DEG
 γ Interval: 1.0DEG
Test System:EVERFINE GO-SPEX500_V1 SYSTEM V2.00.461
Humidity:65.0%
Test Distance:3.160m [K=1.0000]
Remarks: LAMP:BXRE-30G1000-A-83 Ra:90
LENS:PM-0132A-007-056 24R
DRIVER: ECXe 1050.646 700mA
30minutes warm-up

WEC AND CCEC

Test:U:220.07V I:0.1327A P:28.147W PF:0.9611 Freq:49.99Hz Lamp Flux:2523.8x1 lm		
NAME: 2319.200-UA-700	TYPE:	WEIGHT:
SPEC.: 3000K	DIM.:	SERIAL No.: 2310051122
MFR.: RISE	SUR.: 0.002826m2	Shielding Angle:

pcc	80%			70%			50%			30%			10%			0	
pw	50%	30%	10%	50%	30%	10%	50%	30%	10%	50%	30%	10%	50%	30%	10%	0	
pfc	20%			20%			20%			20%			20%			0	
RCR	RCR:Room Cavity Ratio						Wall Exitance Coefficients(WEC)										
0.0																	
1.0	.131	.074	.024	.124	.071	.023	.113	.065	.021	.102	.059	.019	.092	.054	.017		
2.0	.122	.067	.020	.117	.064	.020	.107	.060	.018	.098	.055	.017	.090	.051	.016		
3.0	.114	.060	.018	.109	.059	.018	.101	.055	.017	.094	.051	.016	.087	.048	.015		
4.0	.106	.055	.016	.103	.054	.016	.096	.051	.015	.090	.048	.015	.084	.046	.014		
5.0	.100	.051	.015	.097	.050	.014	.091	.047	.014	.086	.045	.013	.081	.043	.013		
6.0	.094	.047	.014	.092	.046	.013	.087	.044	.013	.082	.043	.013	.078	.041	.012		
7.0	.089	.044	.013	.087	.043	.012	.083	.042	.012	.079	.040	.012	.075	.039	.011		
8.0	.085	.042	.012	.083	.041	.012	.079	.040	.011	.076	.038	.011	.072	.037	.011		
9.0	.081	.039	.011	.079	.039	.011	.076	.038	.011	.073	.036	.010	.070	.035	.010		
10.0	.077	.037	.010	.076	.037	.010	.073	.036	.010	.070	.035	.010	.067	.034	.010		

pcc	80%			70%			50%			30%			10%			0
pw	50%	30%	10%	50%	30%	10%	50%	30%	10%	50%	30%	10%	50%	30%	10%	0
pfc	20%			20%			20%			20%			20%			0
RCR	RCR:Room Cavity Ratio			Ceiling Cavity Exitance Coefficients(CCEC)												
0.0	.178	.178	.178	.152	.152	.152	.104	.104	.104	.059	.059	.059	.019	.019	.019	
1.0	.157	.147	.138	.134	.126	.119	.092	.087	.082	.053	.050	.048	.017	.016	.015	
2.0	.141	.124	.110	.120	.106	.095	.082	.074	.066	.048	.043	.039	.015	.014	.013	
3.0	.127	.106	.089	.109	.091	.077	.075	.063	.054	.043	.037	.032	.014	.012	.010	
4.0	.115	.091	.073	.099	.079	.064	.068	.055	.045	.039	.032	.026	.013	.010	.009	
5.0	.105	.080	.061	.091	.069	.053	.062	.048	.037	.036	.028	.022	.012	.009	.007	
6.0	.097	.071	.052	.083	.061	.045	.058	.043	.032	.033	.025	.019	.011	.008	.006	
7.0	.090	.063	.044	.077	.055	.038	.053	.038	.027	.031	.023	.016	.010	.007	.005	
8.0	.084	.057	.038	.072	.049	.033	.050	.035	.023	.029	.020	.014	.009	.007	.005	
9.0	.079	.051	.033	.068	.045	.029	.047	.031	.020	.027	.019	.012	.009	.006	.004	
10.0	.074	.047	.029	.064	.041	.025	.044	.029	.018	.026	.017	.011	.008	.006	.004	

C Range: 0 - 360DEG
C Interval: 30.0DEG
Test Speed: HIGH
Temperature:25.3℃
Operators:zoe
Test Date:2023-10-5

γ Range: 0 - 180DEG
γ Interval: 1.0DEG
Test System:EVERFINE GO-SPEX500_V1 SYSTEM V2.00.461
Humidity:65.0%
Test Distance:3.160m [K=1.0000]
Remarks: LAMP:BXRE-30G1000-A-83 Ra:90
LENS:PM-0132A-007-056 24R
DRIVER: ECXe 1050.646 700mA
30minutes warm-up

UGR(Unified Glare Rating) Table

Test:U:220.07V I:0.1327A P:28.147W PF:0.9611 Freq:49.99Hz Lamp Flux:2523.8x1 lm										
NAME: 2319.200-UA-700					TYPE:			WEIGHT:		
SPEC.: 3000K					DIM.:			SERIAL No.: 2310051122		
MFR.: RISE					SUR.: 0.002826m2			Shielding Angle:		
ceiling/cavity	0.7	0.7	0.5	0.5	0.3	0.7	0.7	0.5	0.5	0.3
walls	0.5	0.3	0.5	0.3	0.3	0.5	0.3	0.5	0.3	0.3
working plane	0.2	0.2	0.2	0.2	0.2	0.2	0.2	0.2	0.2	0.2
Room dimensions	Viewed crosswise					Viewed endwise				
x = 2H y = 2H	13.9	14.5	14.1	14.7	14.8	13.5	14.1	13.7	14.3	14.4
3H	13.9	14.6	14.2	14.8	14.9	13.5	14.2	13.8	14.4	14.5
4H	13.9	14.5	14.1	14.7	14.9	13.5	14.1	13.7	14.3	14.5
6H	13.8	14.3	14.1	14.6	14.8	13.4	14.0	13.7	14.2	14.4
8H	13.7	14.3	14.0	14.5	14.8	13.4	13.9	13.6	14.1	14.4
12H	13.7	14.2	14.0	14.5	14.7	13.3	13.8	13.6	14.1	14.4
4H 2H	13.9	14.5	14.2	14.7	14.9	13.6	14.2	13.8	14.4	14.6
3H	14.0	14.5	14.3	14.8	15.1	13.7	14.2	14.0	14.4	14.7
4H	13.9	14.4	14.3	14.7	15.0	13.6	14.0	13.9	14.3	14.6
6H	13.8	14.2	14.2	14.6	14.9	13.5	13.9	13.8	14.2	14.6
8H	13.8	14.2	14.2	14.5	14.9	13.4	13.8	13.8	14.2	14.5
12H	13.7	14.1	14.1	14.4	14.8	13.4	13.7	13.8	14.1	14.5
8H 4H	13.8	14.2	14.2	14.5	14.9	13.4	13.8	13.8	14.2	14.5
6H	13.7	14.0	14.1	14.4	14.8	13.3	13.6	13.7	14.0	14.4
8H	13.6	13.9	14.0	14.3	14.7	13.3	13.5	13.7	14.0	14.4
12H	13.5	13.8	14.0	14.2	14.7	13.2	13.4	13.7	13.9	14.3
12H 4H	13.7	14.1	14.1	14.5	14.8	13.4	13.7	13.8	14.1	14.5
6H	13.6	13.9	14.0	14.3	14.7	13.3	13.5	13.7	14.0	14.4
8H	13.5	13.8	14.0	14.2	14.7	13.2	13.4	13.7	13.9	14.3
Variations with the observer position at spacings(CIE Pub.117):										
S = 1.0H	+ 1.2 / - 1.7					+ 1.1 / - 1.7				
1.5H	+ 1.4 / - 1.0					+ 1.0 / - 0.7				
2.0H	+ 2.1 / - 3.6					+ 2.0 / - 3.4				

CIE Pub.117, 2524 lm Total Lamp Luminous Flux Correct (8log(F/F0) = 3.2)
Area: 0.002826 m2

C Range: 0 - 360DEG
C Interval: 30.0DEG
Test Speed: HIGH
Temperature:25.3℃
Operators:zoe
Test Date:2023-10-5

γ Range: 0 - 180DEG
γ Interval: 1.0DEG
Test System:EVERFINE GO-SPEX500_V1 SYSTEM V2.00.461
Humidity:65.0%
Test Distance:3.160m [K=1.0000]
Remarks: LAMP:BXRE-30G1000-A-83 Ra:90
LENS:PM-0132A-007-056 24R
DRIVER: ECXe 1050.646 700mA
30minutes warm-up

UTILIZATION FACTORS TABLE

Test:U:220.07V I:0.1327A P:28.147W PF:0.9611 Freq:49.99Hz Lamp Flux:2523.8x1 lm		
NAME: 2319.200-UA-700	TYPE:	WEIGHT:
SPEC.: 3000K	DIM.:	SERIAL No.: 2310051122
MFR.: RISE	SUR.: 0.002826m2	Shielding Angle:

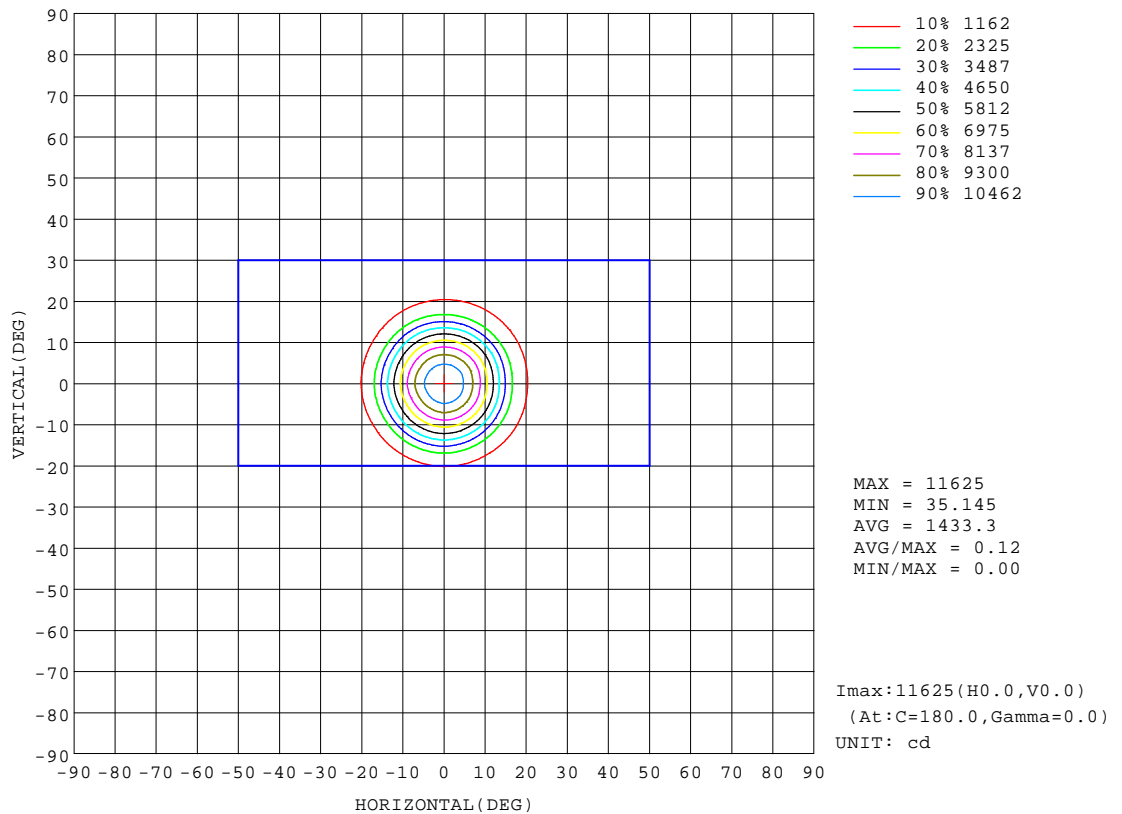
REFLECTANCE										
Ceiling	0.8	0.8	0.8	0.7	0.7	0.7	0.5	0.5	0.5	0
Walls	0.7	0.5	0.3	0.7	0.5	0.3	0.7	0.5	0.3	0
Working plane	0.2	0.2	0.2	0.2	0.2	0.2	0.2	0.2	0.2	0
ROOM INDEX	UTILIZATION FACTORS(PERCENT) $k(RI) \times RCR = 5$									
k = 0.60	83	77	73	82	77	73	81	76	73	70
0.80	89	84	81	89	84	81	88	83	80	77
1.00	93	88	85	92	88	85	91	88	84	81
1.25	97	92	89	96	92	89	94	91	88	84
1.50	99	95	92	98	94	92	96	93	91	87
2.00	102	98	95	100	97	94	98	95	93	88
2.50	103	100	97	102	99	96	99	96	94	89
3.00	104	101	99	103	100	98	100	98	96	90
4.00	106	104	102	104	102	101	101	99	98	92
5.00	107	105	104	106	104	102	102	101	99	92
ROOM INDEX	UF(total)									Direct
According to DIN EN 13032-2 2004			Suspended					SHRNOM = 1.25		

C Range: 0 - 360DEG
C Interval: 30.0DEG
Test Speed: HIGH
Temperature:25.3℃
Operators:zoe
Test Date:2023-10-5

γ Range: 0 - 180DEG
γ Interval: 1.0DEG
Test System:EVERFINE GO-SPEX500_V1 SYSTEM V2.00.461
Humidity:65.0%
Test Distance:3.160m [K=1.0000]
Remarks: LAMP:BXRE-30G1000-A-83 Ra:90
LENS:PM-0132A-007-056 24R
DRIVER: ECXe 1050.646 700mA
30minutes warm-up

ISOCANDELA DIAGRAM

Test:U:220.07V I:0.1327A P:28.147W PF:0.9611 Freq:49.99Hz Lamp Flux:2523.8x1 lm		
NAME: 2319.200-UA-700	TYPE:	WEIGHT:
SPEC.: 3000K	DIM.:	SERIAL No.: 2310051122
MFR.: RISE	SUR.: 0.002826m2	Shielding Angle:

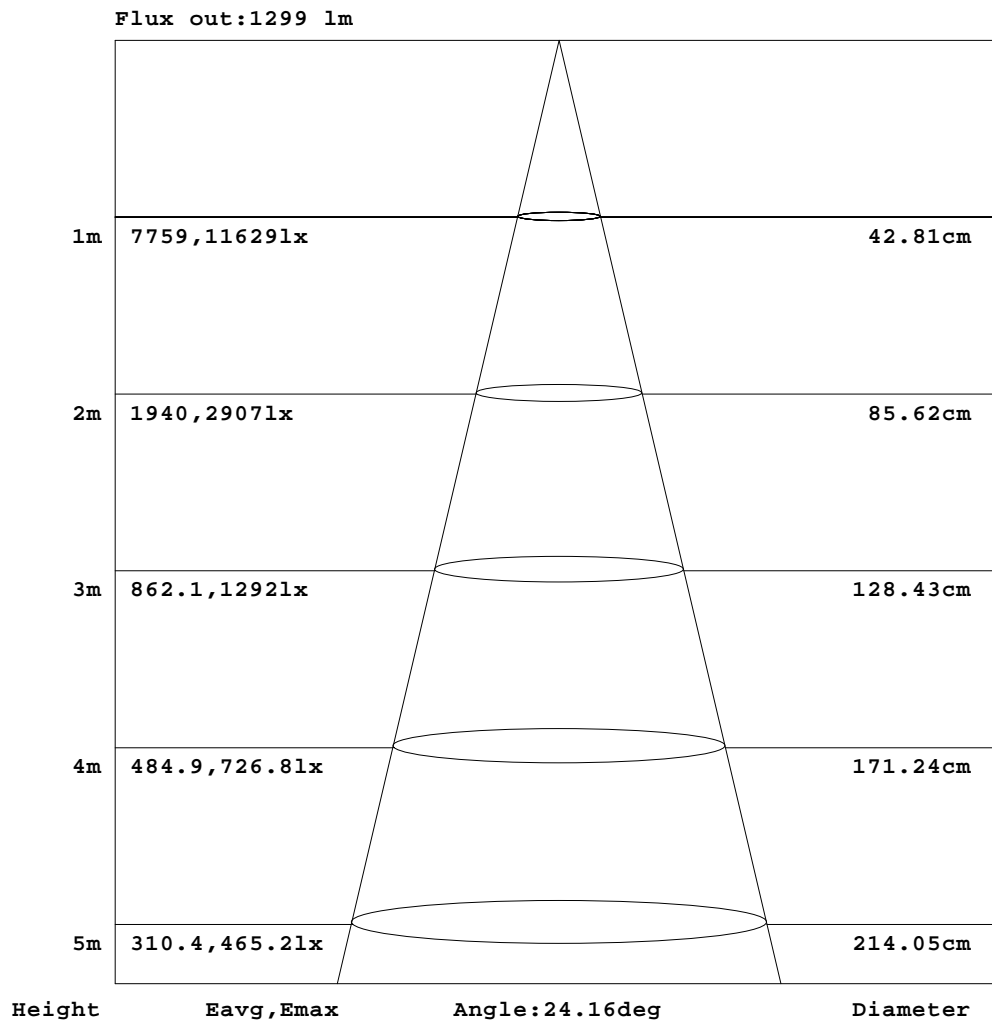


C Range: 0 - 360DEG
C Interval: 30.0DEG
Test Speed: HIGH
Temperature:25.3℃
Operators:zoe
Test Date:2023-10-5

γ Range: 0 - 180DEG
γ Interval: 1.0DEG
Test System:EVERFINE GO-SPEX500_V1 SYSTEM V2.00.461
Humidity:65.0%
Test Distance:3.160m [K=1.0000]
Remarks: LAMP:BXRE-30G1000-A-83 Ra:90
LENS:PM-0132A-007-056 24R
DRIVER: ECXe 1050.646 700mA
30minutes warm-up

AAI Figure

Test:U:220.07V I:0.1327A P:28.147W PF:0.9611 Freq:49.99Hz Lamp Flux:2523.8x1 lm		
NAME: 2319.200-UA-700	TYPE:	WEIGHT:
SPEC.: 3000K	DIM.:	SERIAL No.: 2310051122
MFR.: RISE	SUR.: 0.002826m2	Shielding Angle:



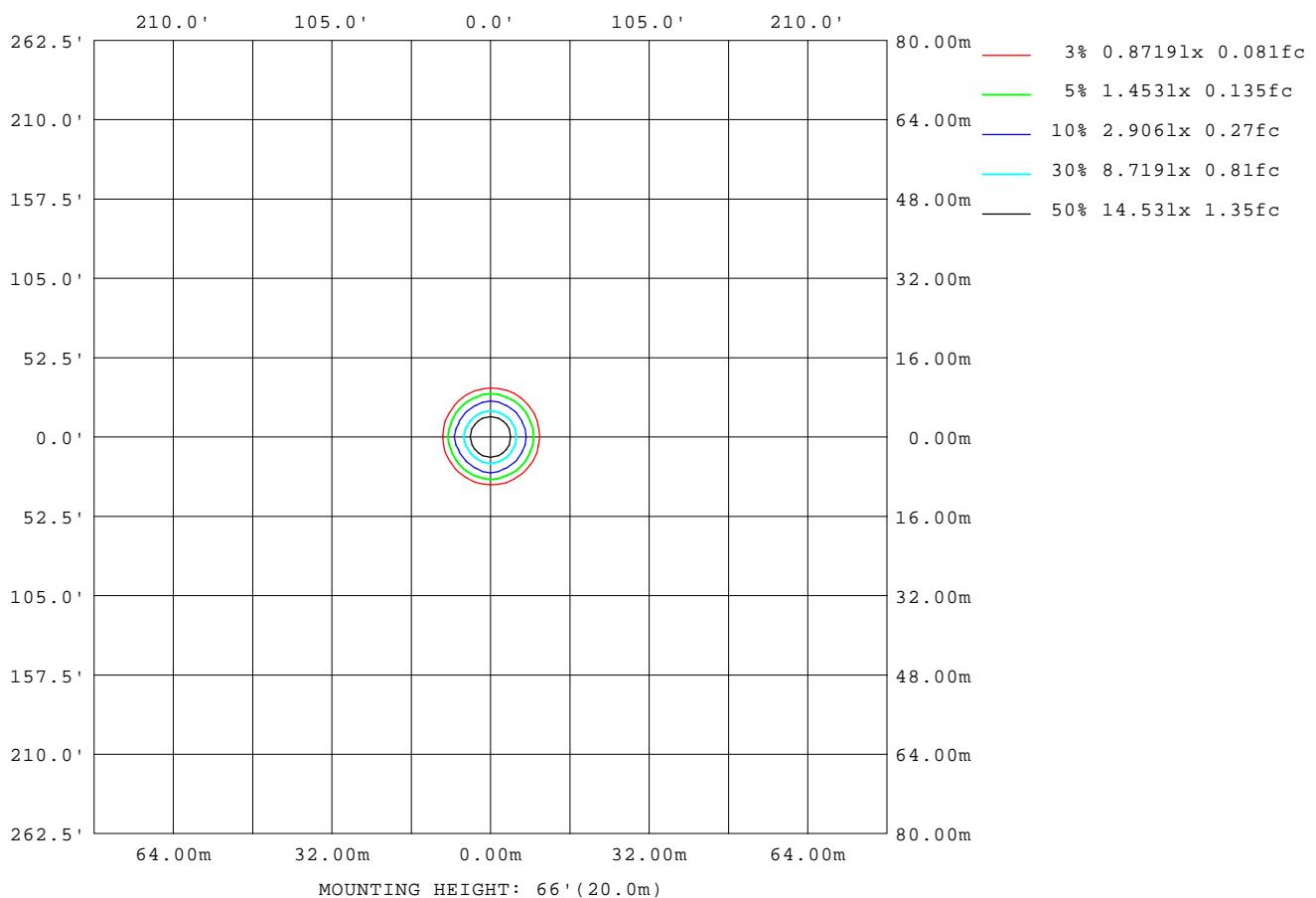
Note:The Curves indicate the illuminated area and the average illumination when the luminaire is at different distance.

C Range: 0 - 360DEG
C Interval: 30.0DEG
Test Speed: HIGH
Temperature:25.3℃
Operators:zoe
Test Date:2023-10-5

γ Range: 0 - 180DEG
γ Interval: 1.0DEG
Test System:EVERFINE GO-SPEX500_V1 SYSTEM V2.00.461
Humidity:65.0%
Test Distance:3.160m [K=1.0000]
Remarks: LAMP:BXRE-30G1000-A-83 Ra:90
LENS:PM-0132A-007-056 24R
DRIVER: ECXe 1050.646 700mA
30minutes warm-up

ISOLUX DIAGRAM

Test:U:220.07V I:0.1327A P:28.147W PF:0.9611 Freq:49.99Hz Lamp Flux:2523.8x1 lm		
NAME: 2319.200-UA-700	TYPE:	WEIGHT:
SPEC.: 3000K	DIM.:	SERIAL No.: 2310051122
MFR.: RISE	SUR.: 0.002826m2	Shielding Angle:



C Range: 0 - 360DEG
C Interval: 30.0DEG
Test Speed: HIGH
Temperature: 25.3 °C
Operators: zoe
Test Date: 2023-10-5

γ Range: 0 - 180DEG
γ Interval: 1.0DEG
Test System: EVERFINE GO-SPEX500_V1 SYSTEM V2.00.461
Humidity: 65.0%
Test Distance: 3.160m [K=1.0000]
Remarks: LAMP: BXRE-30G1000-A-83 Ra: 90
LENS: PM-0132A-007-056 24R
DRIVER: ECXe 1050.646 700mA
30minutes warm-up

LED Avg.L Report

Test:U:220.07V I:0.1327A P:28.147W PF:0.9611 Freq:49.99Hz Lamp Flux:2523.8x1 lm		
NAME: 2319.200-UA-700	TYPE:	WEIGHT:
SPEC.: 3000K	DIM.:	SERIAL No.: 2310051122
MFR.: RISE	SUR.: 0.002826m2	Shielding Angle:

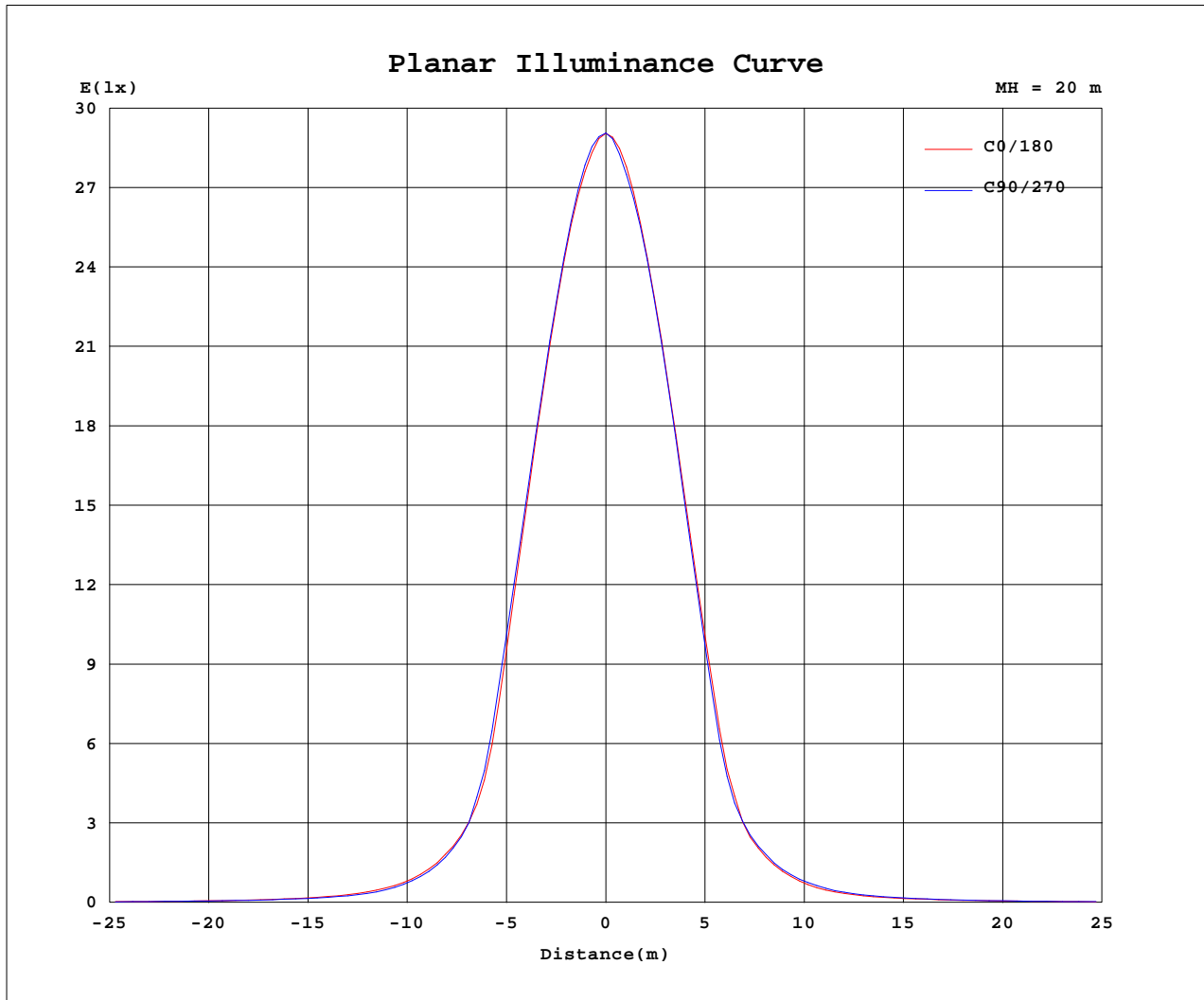
AvgL	cd/m2
L_0~180(65)av	10667
L_0~180(75)av	656
L_0~180(85)av	341
L_90~270(65)av	10607
L_90~270(75)av	659
L_90~270(85)av	297
L_45(65)av	10717
L_45(75)av	687
L_45(85)av	178

Standard: GB/T 29293-2012

C Range: 0 - 360DEG
C Interval: 30.0DEG
Test Speed: HIGH
Temperature:25.3℃
Operators:zoe
Test Date:2023-10-5

γ Range: 0 - 180DEG
γ Interval: 1.0DEG
Test System:EVERFINE GO-SPEX500_V1 SYSTEM V2.00.461
Humidity:65.0%
Test Distance:3.160m [K=1.0000]
Remarks: LAMP:BXRE-30G1000-A-83 Ra:90
LENS:PM-0132A-007-056 24R
DRIVER: ECXe 1050.646 700mA
30minutes warm-up

Planar Illuminance Curve



C Range: 0 - 360DEG
 C Interval: 30.0DEG
 Test Speed: HIGH
 Temperature: 25.3 °C
 Operators: zoe
 Test Date: 2023-10-5

γ Range: 0 - 180DEG
 γ Interval: 1.0DEG
 Test System: EVERFINE GO-SPEX500_V1 SYSTEM V2.00.461
 Humidity: 65.0%
 Test Distance: 3.160m [K=1.0000]
 Remarks: LAMP: BXRE-30G1000-A-83 Ra: 90
 LENS: PM-0132A-007-056 24R
 DRIVER: ECXe 1050.646 700mA
 30minutes warm-up

LUMINOUS DISTRIBUTION INTENSITY DATA

Test:U:220.07V I:0.1327A P:28.147W PF:0.9611 Freq:49.99Hz Lamp Flux:2523.8x1 lm		
NAME: 2319.200-UA-700	TYPE:	WEIGHT:
SPEC.: 3000K	DIM.:	SERIAL No.: 2310051122
MFR.: RISE	SUR.: 0.002826m2	Shielding Angle:

Table--1

UNIT: X10cd

C(DEG) γ (DEG)	0	30	60	90	120	150	180	210	240	270	300	330						
0	1163	1163	1163	1163	1163	1163	1163	1163	1163	1163	1163	1163						
5	1035	1041	1039	1041	1032	1027	1038	1029	1032	1033	1038	1043						
10	731	739	741	739	730	724	740	731	735	734	741	748						
15	340	352	361	368	362	357	370	354	357	350	352	358						
20	123	123	118	120	115	113	120	116	120	123	125	125						
25	57.3	55.1	52.8	53.0	50.6	50.1	52.9	51.4	54.0	56.8	58.2	57.9						
30	29.1	28.2	26.6	25.2	24.0	24.0	24.9	24.6	26.5	28.1	29.9	30.0						
35	16.7	15.9	15.0	14.7	14.2	14.1	14.6	14.5	15.5	16.2	17.1	17.1						
40	11.1	10.6	10.2	10.1	9.94	9.88	10.1	10.1	10.6	10.9	11.5	11.3						
45	7.95	7.77	7.46	7.38	7.35	7.33	7.41	7.49	7.66	7.87	8.28	8.17						
50	6.15	5.90	5.76	5.57	5.45	5.47	5.52	5.54	5.87	5.96	6.19	6.31						
55	4.40	4.25	4.12	4.01	3.85	3.85	3.90	3.89	4.08	4.23	4.45	4.55						
60	2.66	2.61	2.51	2.43	2.29	2.28	2.30	2.29	2.41	2.50	2.65	2.75						
65	1.32	1.34	1.32	1.28	1.22	1.23	1.22	1.21	1.26	1.26	1.30	1.36						
70	0.60	0.61	0.60	0.56	0.51	0.53	0.52	0.52	0.56	0.55	0.59	0.63						
75	0.06	0.07	0.06	0.05	0.03	0.03	0.04	0.03	0.04	0.04	0.06	0.08						
80	0.01	0.01	0.01	0.01	0.01	0.01	0.01	0.01	0.01	0.01	0.01	0.01						
85	0.01	0.01	0.01	0.01	0.01	0.00	0.01	0.00	0.00	0.01	0.00	0.00						
90	0.00	0.00	0.00	0.00	0.00	0.00	0.00	0.00	0.00	0.00	0.00	0.00						
95	0.00	0.00	0.00	0.00	0.00	0.00	0.00	0.00	0.00	0.00	0.00	0.00						
100	0.00	0.00	0.00	0.00	0.00	0.00	0.00	0.00	0.00	0.00	0.00	0.00						
105	0.00	0.00	0.00	0.00	0.00	0.00	0.00	0.00	0.00	0.00	0.00	0.00						
110	0.00	0.00	0.00	0.00	0.00	0.00	0.00	0.00	0.00	0.00	0.00	0.00						
115	0.00	0.00	0.00	0.00	0.00	0.00	0.00	0.00	0.00	0.00	0.00	0.00						
120	0.00	0.00	0.00	0.00	0.00	0.00	0.00	0.00	0.00	0.00	0.00	0.00						
125	0.00	0.00	0.00	0.00	0.00	0.00	0.00	0.00	0.00	0.00	0.00	0.00						
130	0.00	0.00	0.00	0.00	0.00	0.00	0.00	0.00	0.00	0.00	0.00	0.00						
135	0.00	0.00	0.00	0.00	0.00	0.00	0.00	0.00	0.00	0.00	0.00	0.00						
140	0.00	0.00	0.00	0.00	0.00	0.00	0.00	0.00	0.00	0.00	0.00	0.00						
145	0.00	0.00	0.00	0.00	0.00	0.00	0.00	0.00	0.00	0.00	0.00	0.00						
150	0.00	0.00	0.00	0.00	0.00	0.00	0.00	0.00	0.00	0.00	0.00	0.00						
155	0.00	0.00	0.00	0.00	0.00	0.00	0.00	0.00	0.00	0.00	0.00	0.00						
160	0.00	0.00	0.00	0.00	0.00	0.00	0.00	0.00	0.00	0.00	0.00	0.00						
165	0.00	0.00	0.00	0.00	0.00	0.00	0.00	0.00	0.00	0.00	0.00	0.00						
170	0.00	0.00	0.00	0.00	0.00	0.00	0.00	0.00	0.00	0.00	0.00	0.00						
175	0.00	0.00	0.00	0.00	0.00	0.00	0.00	0.00	0.00	0.00	0.00	0.00						
180	0.00	0.00	0.00	0.00	0.00	0.00	0.00	0.00	0.00	0.00	0.00	0.00						

C Range: 0 - 360DEG
C Interval: 30.0DEG
Test Speed: HIGH
Temperature:25.3℃
Operators:zoe
Test Date:2023-10-5

γ Range: 0 - 180DEG
γ Interval: 1.0DEG
Test System:EVERFINE GO-SPEX500_V1 SYSTEM V2.00.461
Humidity:65.0%
Test Distance:3.160m [K=1.0000]
Remarks: LAMP:BXRE-30G1000-A-83 Ra:90
LENS:PM-0132A-007-056 24R
DRIVER: ECXe 1050.646 700mA
30minutes warm-up